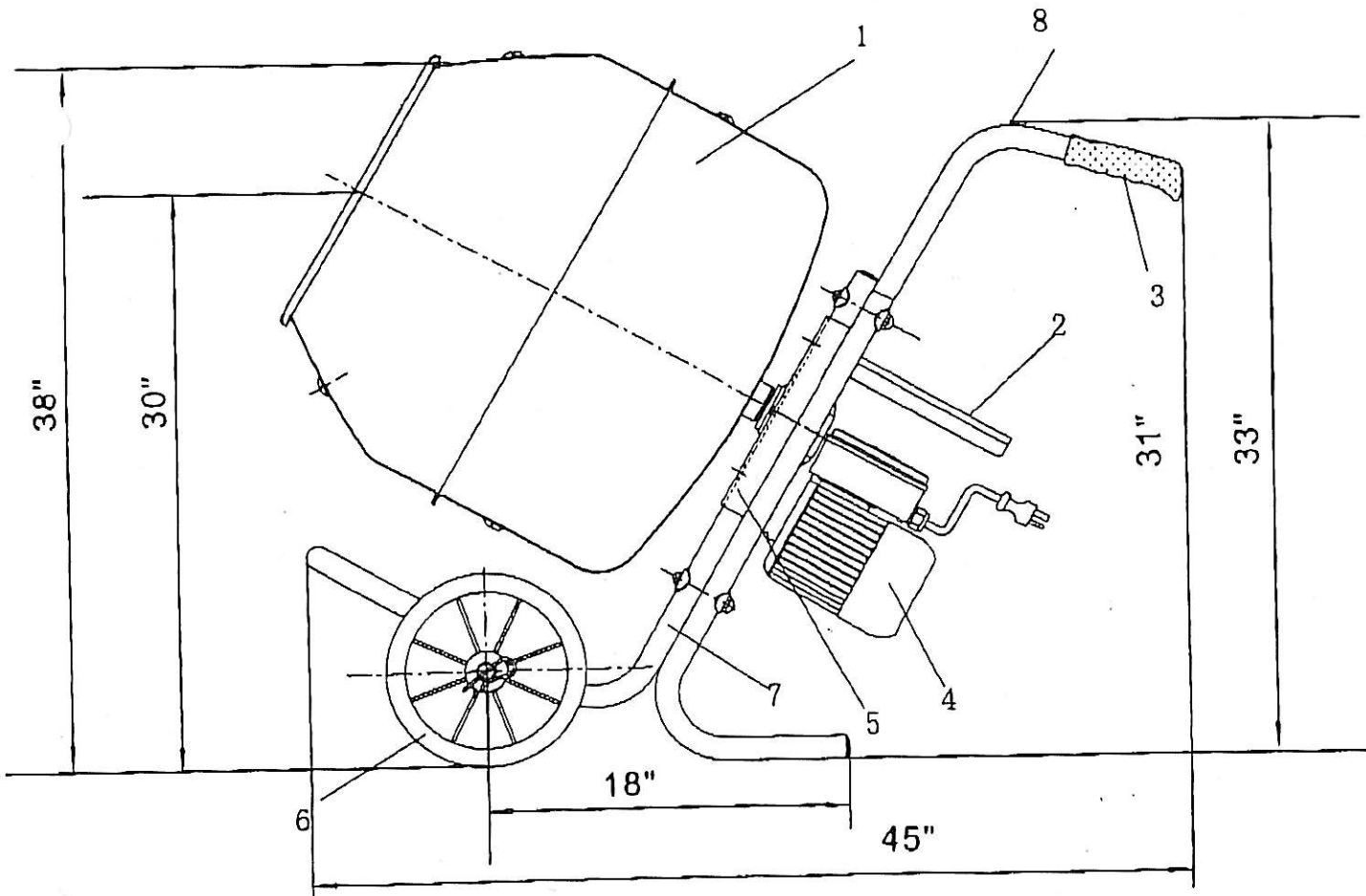


PC M5-H2

## TABLE OF CONTENTS

TECHNICAL DATA .....	page4
NOISE EMISSION LEVEL .....	page4
WIRING DIAGRAM .....	page5
SAFETY NOTES .....	page6
ASSEMBLY .....	page8
MOVING THE MIXER .....	page9
SETTING UP THE MIXER .....	page9
OPERATING THE MIXER .....	page11
MAINTENANCE AND CLEANING .....	page11
ORDERING SPARE PARTS .....	page12
SPARE PARTS DIAGRAM .....	page12
SPARE PARTS DIAGRAM .....	page13



- 1 MIXING DRUM
- 2 ON/OFF SWITCH
- 3 DUMP HANDLE
- 4 MOTOR AND GEARBOX DRIVE

- 5 GEARBOX MOUNTING FRAME
- 6 WHEELS
- 7 MAIN FRAME
- 8 DRAW BAR

Drum capacity	5 cubic feet
Batch Output	2.5 cubic feet, 270 lbs.*
Drum Diameter	24 inches
Discharge outlet height	18"
Wheels	10" X 3"
Single Phase electric motor	.5 H.p
Storage dimensions	25" X 25" X 25.5"
Weight	120 pounds
Hertz	60
Voltage	110V
Motor R.P.M.	1440

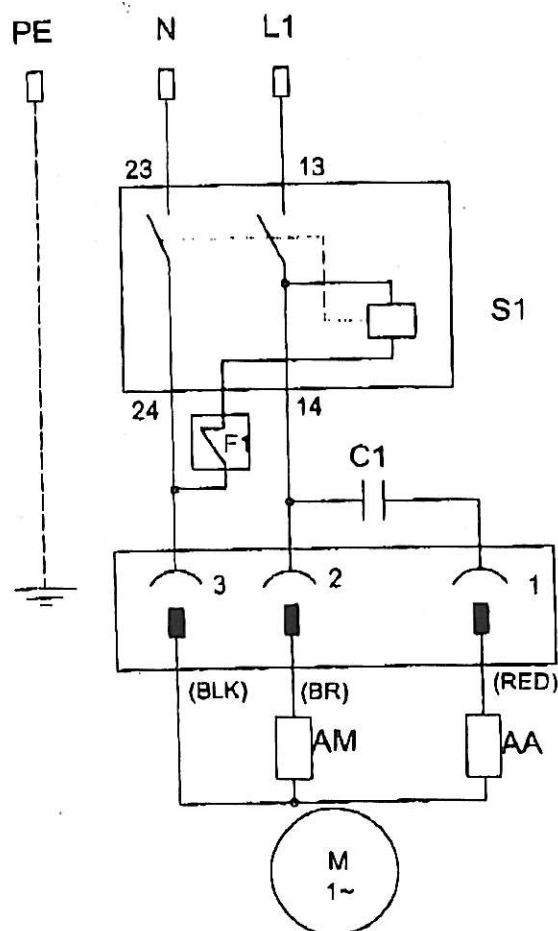
\*Capacities based on usable volume.

Product development and improvement is an ongoing process, therefore, specifications may change without notice.

## NOISE EMISSION LEVEL

The MIXER has a noise emission level of 80 decibels.

## WIRING DIAGRAM



- S1 RESTART PROTECTION SWITCH
- C1 CONDENSER
- X1 MOTOR CONNECTOR
- PE LINE-PROTECTION
- N LINE-NEUTRAL
- L1 LINE-PHASE
- AM MOTOR RUNNING WINDING
- F1 THERMIC PROBE

## WARNING

Any type of electrical repair or trouble-shooting should only be performed by an appointed dealer or a properly qualified electrical repair shop.

## **SAFETY NOTES**

### **IMPORTANT! READ THIS SECTION CAREFULLY!**

*Your HORIZONTAL mixer has been designed with safety in mind. However, as with any type of machinery, some basic DO'S and DON'T apply:*

#### **DO NOT**

*Place your hand or hands in or around any part of the drum while it is operating!*



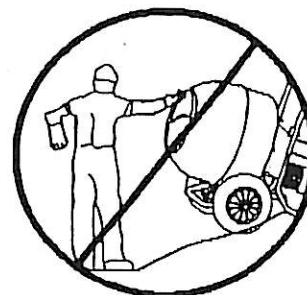
#### **DO NOT**

*Place any tools or instruments in or around the drum while it is operating!*



#### **DO NOT**

*Operate the mixer on a surface that is not flat or is uneven!*



*Always operate the mixer on a level surface,  
is placed on an incline the machine will fall over.*

#### **DO NOT**

*Clean, assemble or work on the unit while it is plugged in!*

#### **DO NOT**

*Allow water to contact the motor or electrical connections at any time!*

**DO NOT**

*Operate the unit in or around water puddles.*

**DO NOT**

*Leave the machine unattended!*

**DO NOT**

*Allow other persons around the mixer while it is operating!*

**DO NOT**

*Operate the mixer while under the influence of alcohol or drugs!*

**DO NOT**

*DO not start and stop the mixer with material in the drum, this will damage the motor and is not the best way to mix.*

*Always have the drum rotating when tilling or discharging the mixer*

**SAFETY NOTES****DO**

*Read all the instructions before operating the mixer.*

**DO**

*Use caution when assembling and transporting the mixer.*

**DO**

*Keep the mixer clean and free of debris and mix build-up.*

**DO**

*Keep all the moving parts lightly greased(wheel axles, swivel bracket, etc.)*

**DO**

*Periodically inspect your mixer for abnormal wear or damage.*

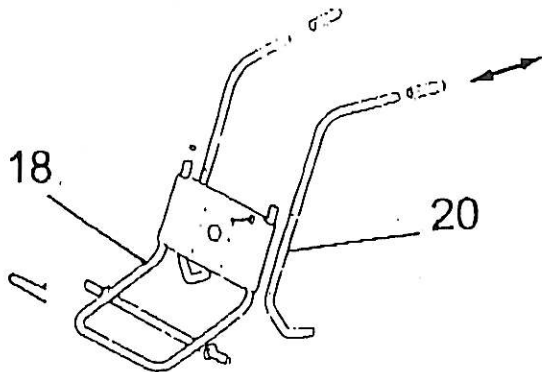
**DO**

*Wear the appropriate safety gear; hard hat, gloves, goggles, ear protection and wear tight clothing around the mixer. Loose clothing can cause injury should it become entangled with the mixer.*

## ASSEMBLY

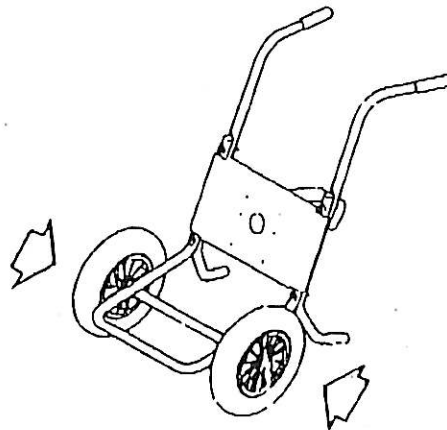
1

Place the main frame (#18 Drawing 1) on a level surface as illustrated in this diagram. Insert and secure the draw bar (#20 Drawing 1) into the main frame with the 3" hexhead bolt and nut, using the open wrench provided in the assembly kit.



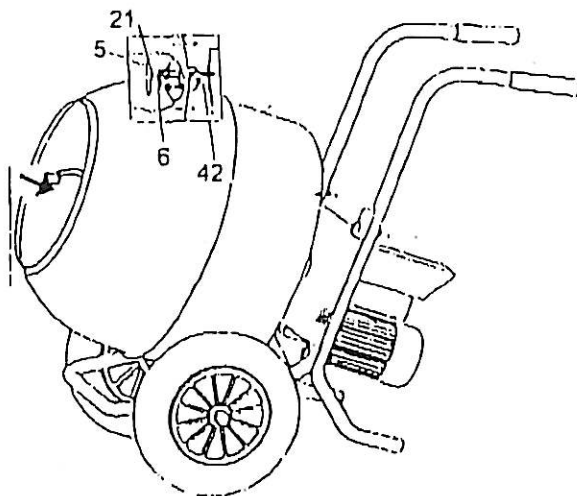
2

Slide the wheels (#18 Drawing 1) onto the main frame bar (#18 Drawing 1) and anchor them in place with the cotter pins (#13 Drawing 1) which are included in the assembly kit provided with each MINUTEMAN mixer.



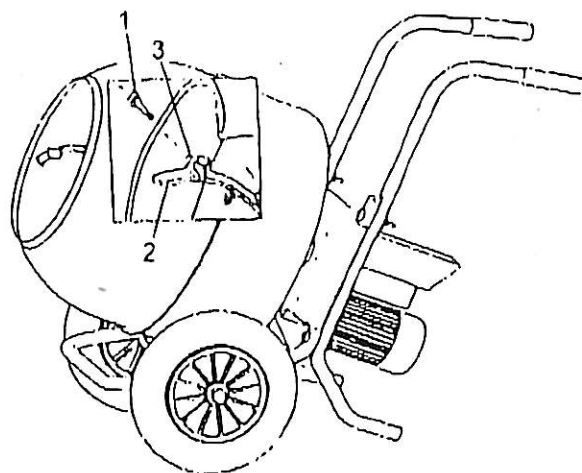
3

Mount the mixing drum (#4 Drawing 1) onto the gear-box shaft (#42 Drawing 2) by aligning the guide notch with the locating pin on the gear shaft. Secure the drum to the gear-box shaft with the T-handle bolt (#5 Drawing 1) and washer (#6 & #23 Drawing 1) provided in the assembly kit.



4

Secure the mixing blades (#2 Drawing 1) to the inner drum with the screws (#1 Drawing 1) and nuts (#3 Drawing 1) provided in the assembly kit. Assembly with the screws heads on the outer drum. Finally, insert tilting handle (#10 Drawing 1) in the handy mounting tube and lock using the cotter pin provided in the assembly kit.



## **MOVING THE MIXER**

### **WARNING**

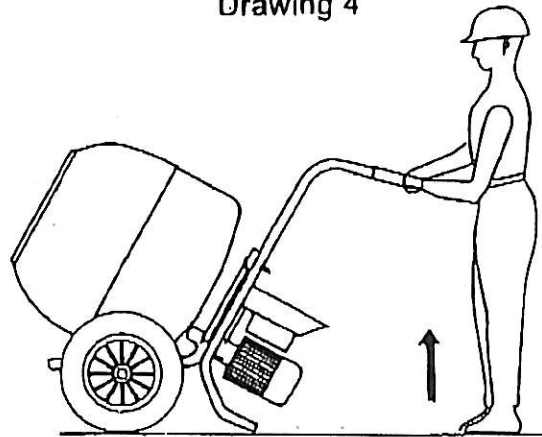
*Always disconnect the power cord before moving the mixer.*

*To roll the machine, hold the support leg and dump handle move as shown in Drawing 4.*

### **WARNING**

*Do not attempt to move the mixer when there is material in the drum, it must be empty.*

Drawing 4

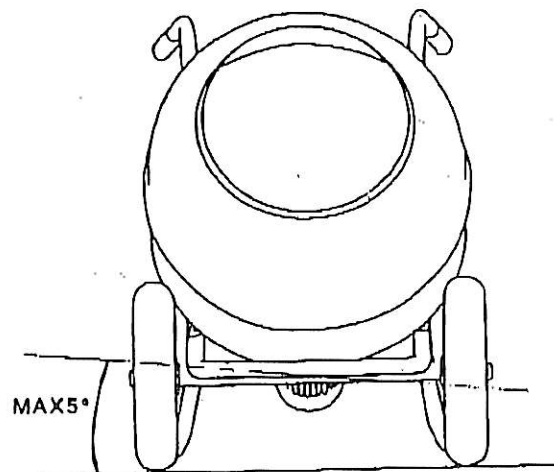


## **SET-UP**

*Position the machine on a level surface as illustrated in the drawing 6(maximum allowing 6).*

*To complete the mixer set-up, before loading the drum, make sure the mixer can properly discharge into a wheel barrow.*

Drawing 6



## OPERATION

1) Use a 3 prong, grounded, 230 volt power connection for safe operation. The line should be at

least 14 gauge.

2) To mix concrete, add water, concrete, and aggregate while the drum is rotating.

3) Discharge the mixed concrete by elevating the dump handle (#10 Drawing 1) while the drum is rotating.

**NOTE:** When tilting the drum to discharge the concrete, do so slowly. It is important to perform the discharge smoothly, this keeps the machine balanced and upright.

4) The ON/OFF switch in the motor of the HORIZONTAL mixer provides thermal protection to the motor in the event of overheating. Should your motor to cool. After the continue to run, contact your local products distributor.

## MAINTENANCE

The HORIZONTAL mixer requires very low maintenance. However, a few basic maintenance procedures should be followed.

**NOTE:** Always unplug the mixer from its power source before any cleaning or maintenance functions are performed.

1) Clean the mixer after each use and do not allow any concrete to build up on any portion of the mixer.

2) Change the gear-box oil approximately every 3000 hours of operation (Use SEA 40). Essentially the gearbox is sealed for the life of the mixer.

3) Keep all moving parts lightly greased.

4) Keep the electric motor cooling fins clean and free of debris build-up.

**NOTE:** When spraying the mixer with water, do not direct the water, onto the motor or the ON/OFF switch assembly.

## SPARE PARTS

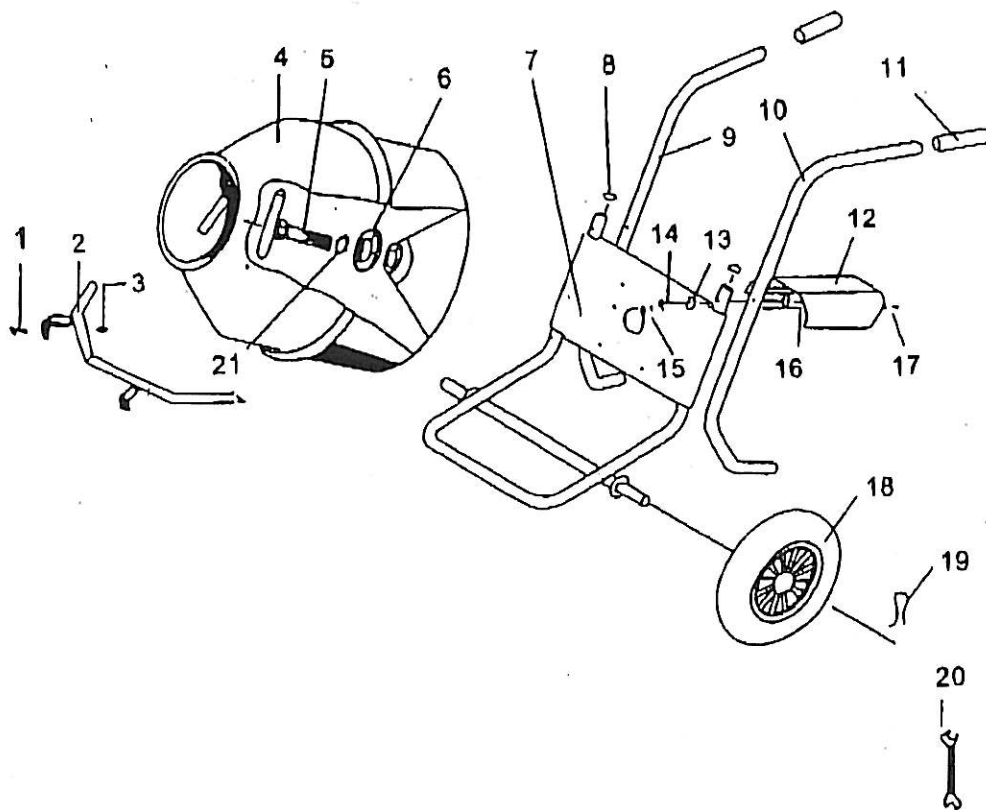
All orders for spare parts must include the following:

1) Type of machine.

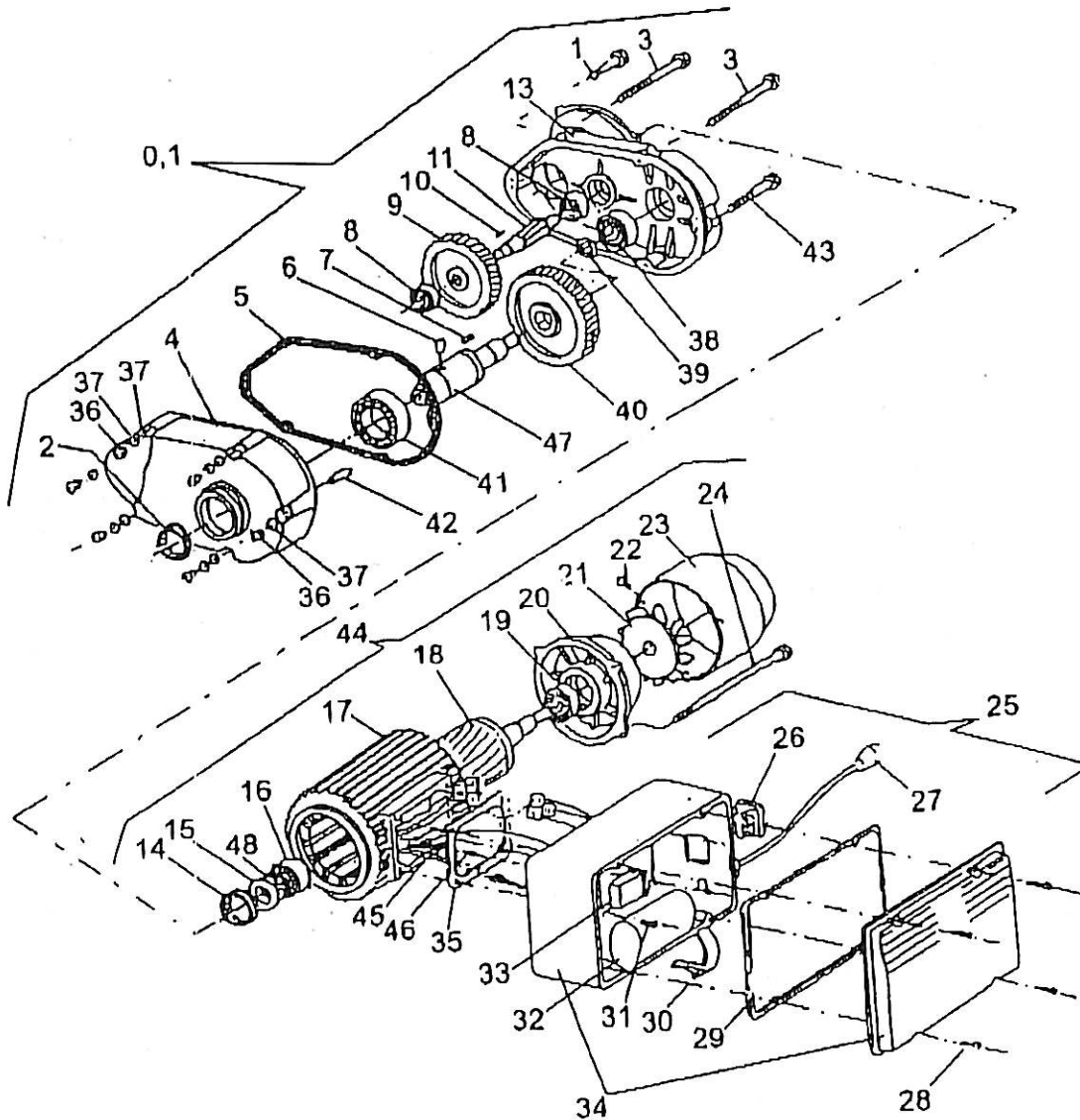
2) Part number and drawing references of each part.



DRAWING 1 FRAME AND DRUM ASSEMBLY		
Ref.	DESCRIPTION	NOTE
1	SCREW	TB M12X25
2	MIXNG PADDLE	
3	NUT	M12
4	DRUM	
5	T-BOLT	
6	WASHER	14X36X6
7	CHASSIS	
8	PLUG	
9	RIGHT HANDLE	
10	LEFT HANDLE	
11	HANDLE LAGGING	
12	GEARBOX FRAMEWASHER	
13	WASHER	
14	SCREW	
15	NUT AND WASHER	
16	NUT	
17	SEREW AND WASHER	
18	WHEEL	
19	WTTER PIN	
20	WRENCH	
21	SPRING WASHER	
22		



## DRAWING 2 MOTOR AND GEARBOX ASSEMBLY(230V-50Hz)



DRAWING 2 MOTOR AND GEARBOX ASSEMBLY (115V - 60Hz)		
Ref.	DESCRIPTION	NOTE
0,1	MOTOR AND GEARBOX ASSEMBLY	115V-60Hz
1	SCREW	5739 M6X25
2	SEAL	55X40X7
3	SCREW	M6X50
4	GEAR-BOX CASE HALF	
5	ASKET	
6	PIN	8X12
7	KEY	
8	BALL BEARING	6201
9	GEAR	Z79
10	KEY	5X5X12
11	PINION	Z9
13	CASE HALVE	
14	SEAL	42X20X7
15	SPACER WASHER	
16	BEARING	6004
17	CASING	
18	ROTOR	
19	BEARING	6202
20	BELL HOUSING	
21	FAN	
22	SCREW	TC 3.5X9.5
23	FAN COVER	
24	BOLT	SPEC.M5X135
25	ELECTRIC PANEL	115V-60HZ
26	ON OFF SWITCH	
27	POWER CORD WITH PLUG	0.35M
28	SCREW	TC PH 3.9X22
29	GASKET	
30	SUPPORT	
31	SCREW	TRILOB.TC PH M4X10N
32	CONDENSER	uF 40 V 250
33	CABLED RELAY	VI15
34	ELECTRIC BOX ASS'Y	
35	GASKET	
36	NUT	M6
37	WASHER	ø6X12.5
38	BEARING	6205
39	SPACER WASHER	E/30
40	GEAR	Z68
41	BEARING	6008
42	LOCATING PIN	ø6X10
43	BOLT	M6X40
44	MOTOR	115V-60HZ
45	WASHER	ø4
46	SCREW	TC PH M4X6
47	GEAR BOX DRIVE SHAFT	
48	STOP RING	ø42X30X0.3